

Vildsvin in på gårdsknuten

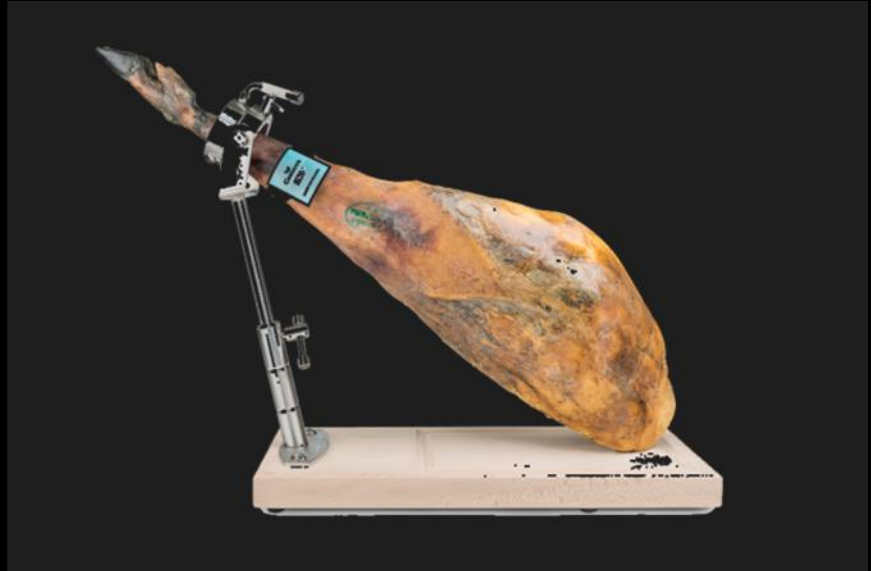
Infektionssjukdomar och epidemiologi i gränlandet mellan vilda och tama djur

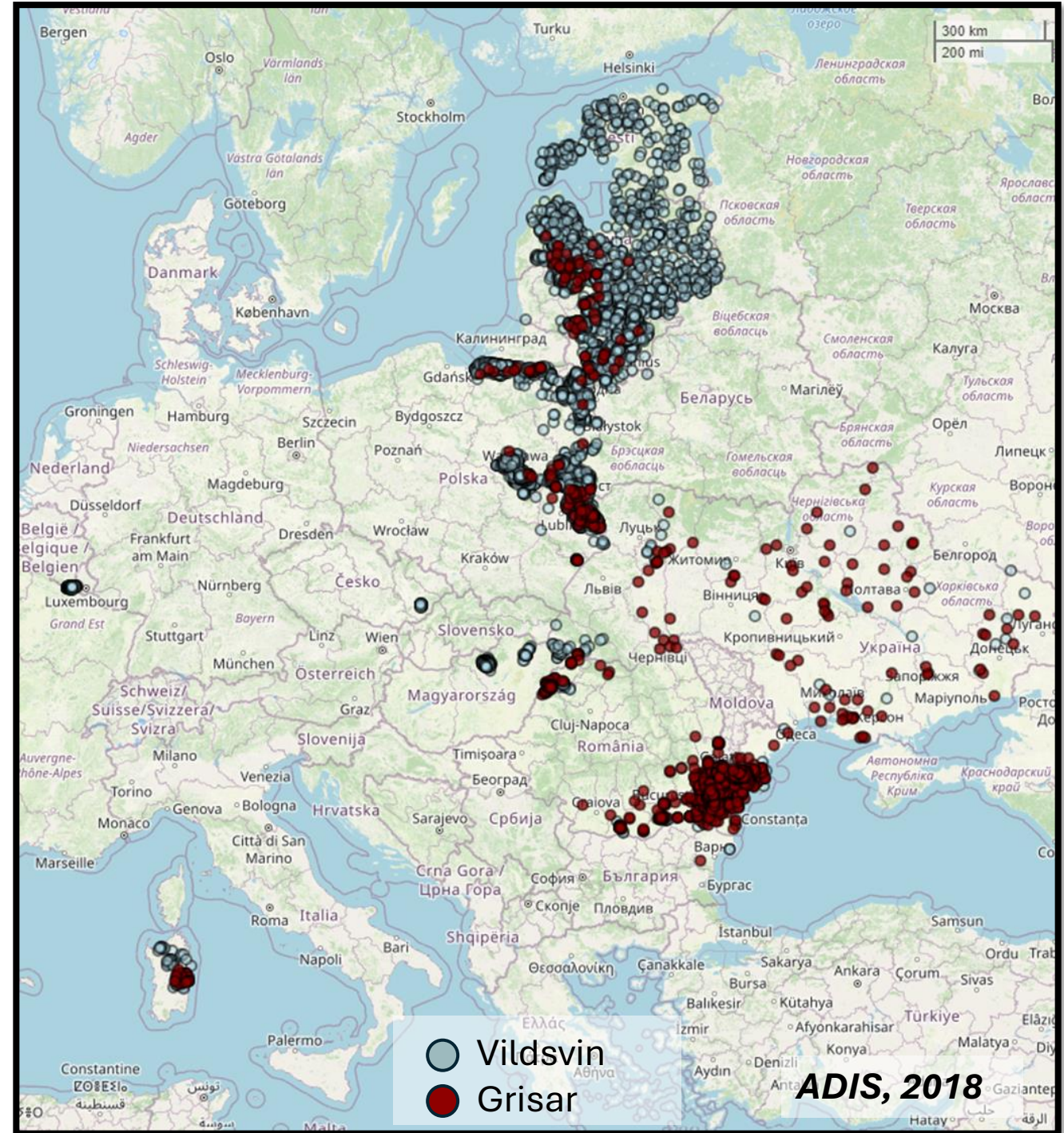
Linda Ernholm, SVA





African Swine fever (ASF)





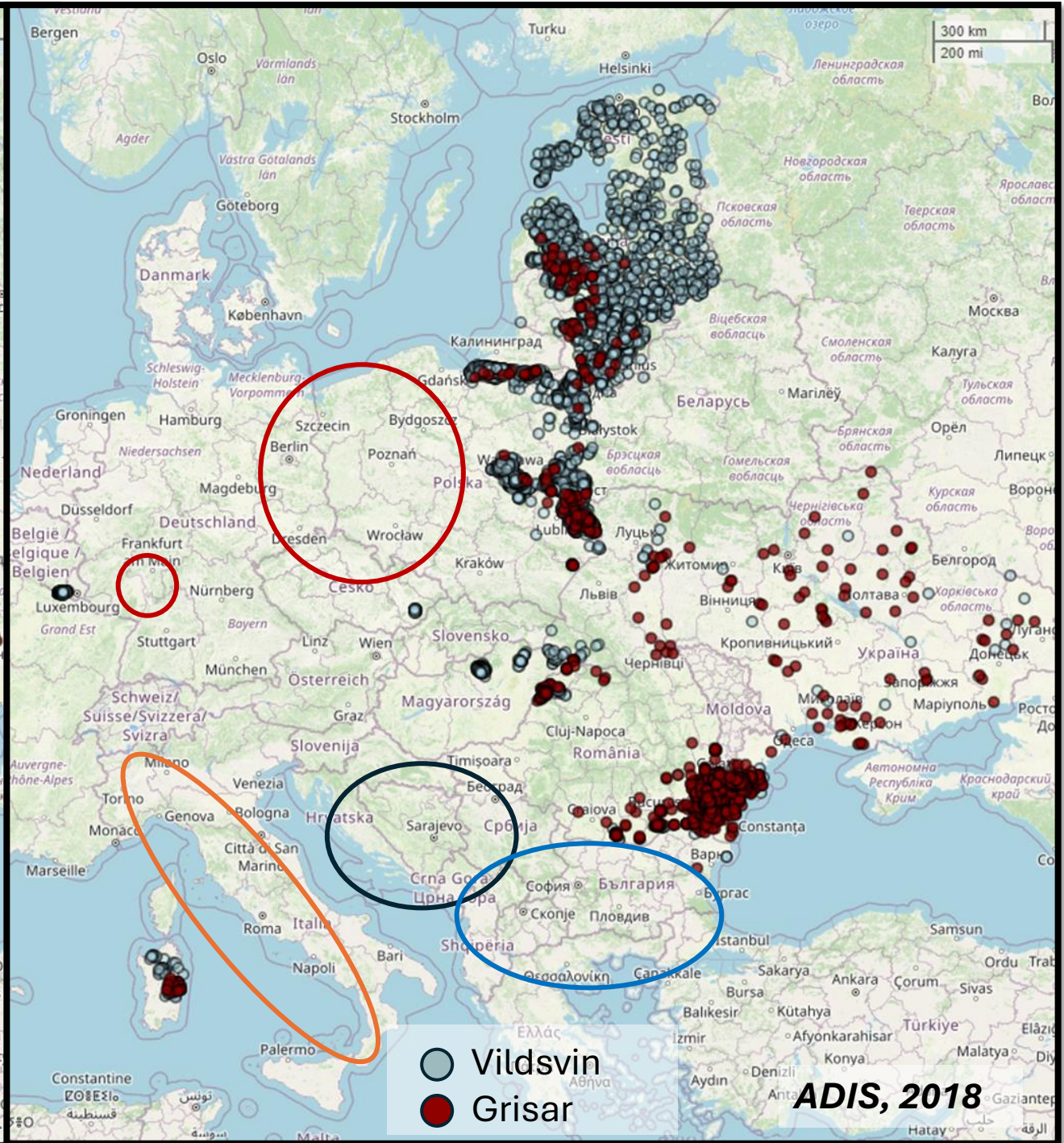
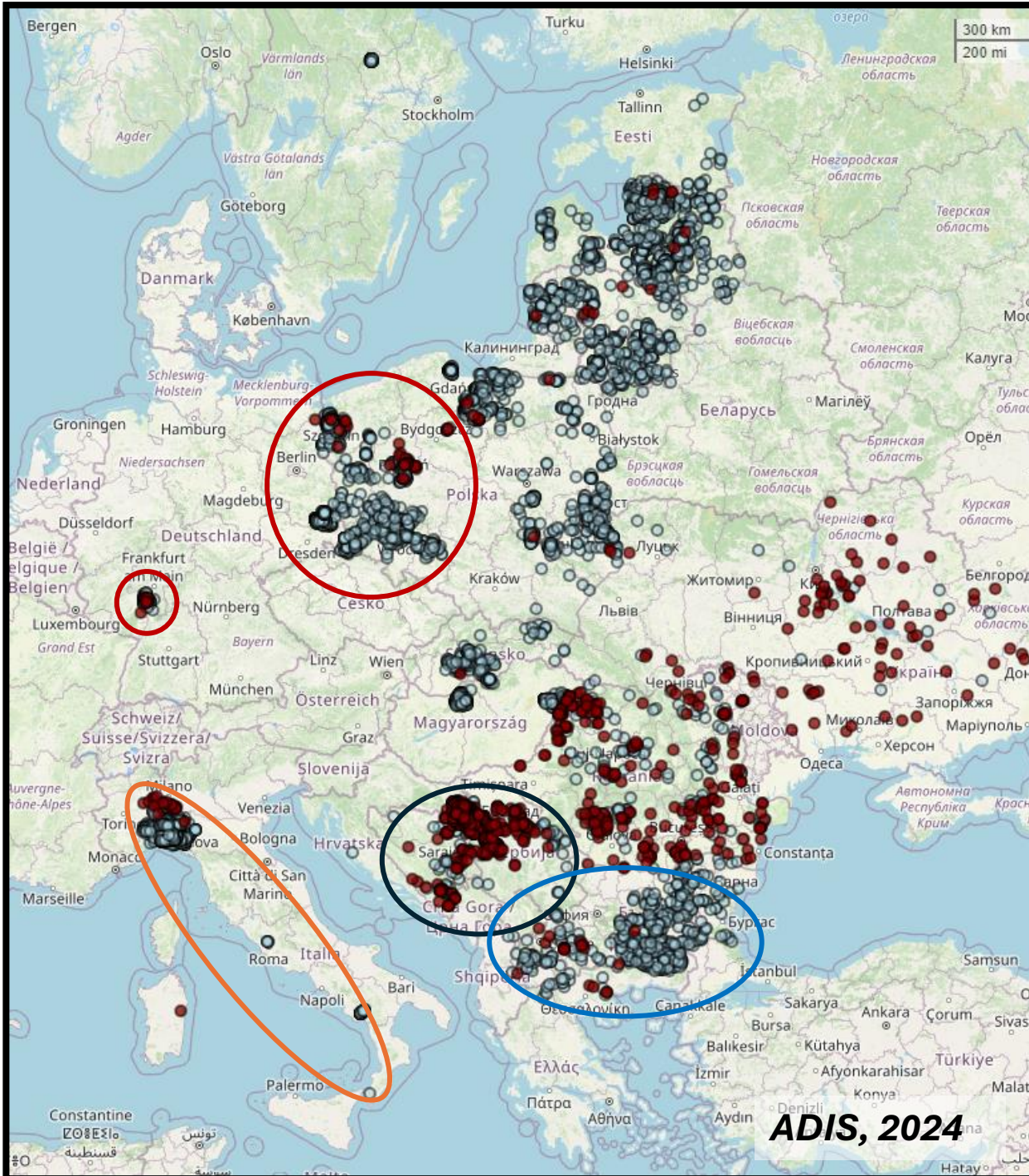
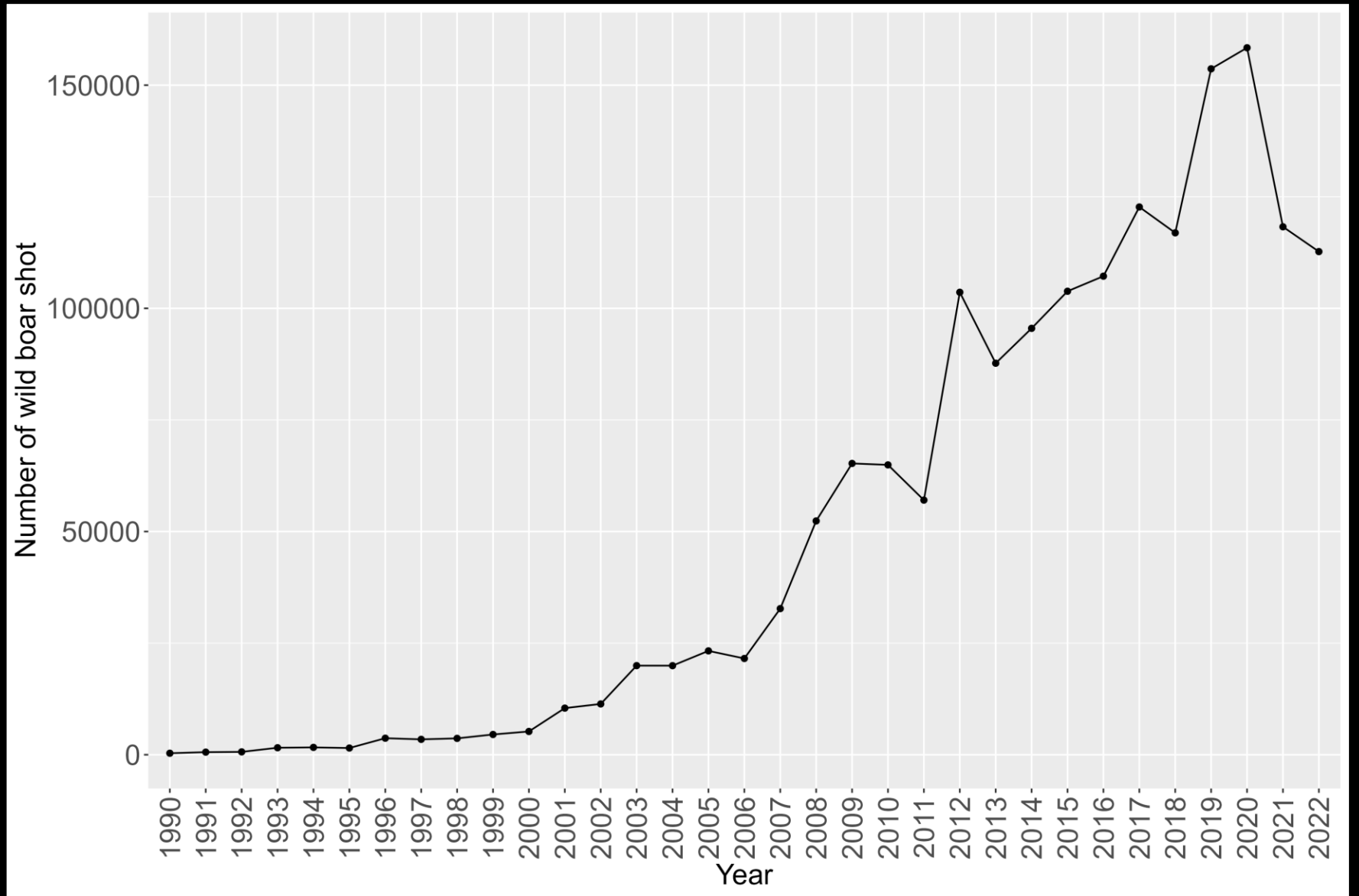




Photo: unsplash.com

Fällda vildsvin 1990-2022

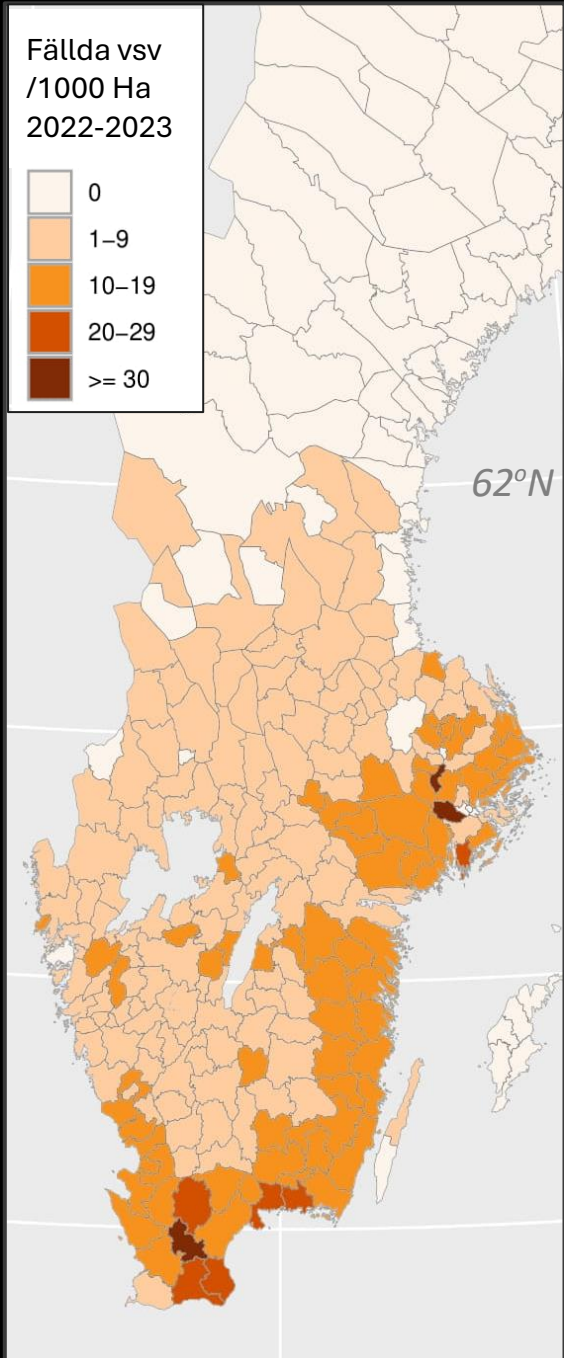


~300.000

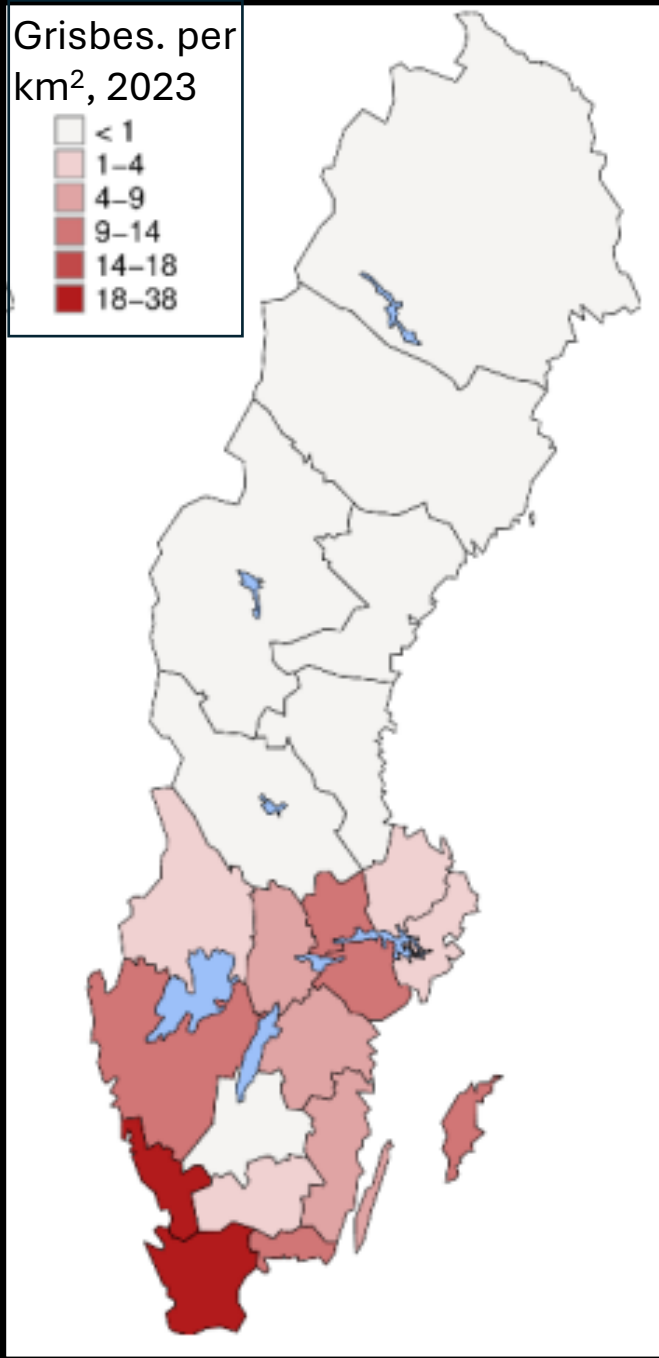
Viltdata.se



Photo: unsplash.com



Viltdata



SJV, 2020



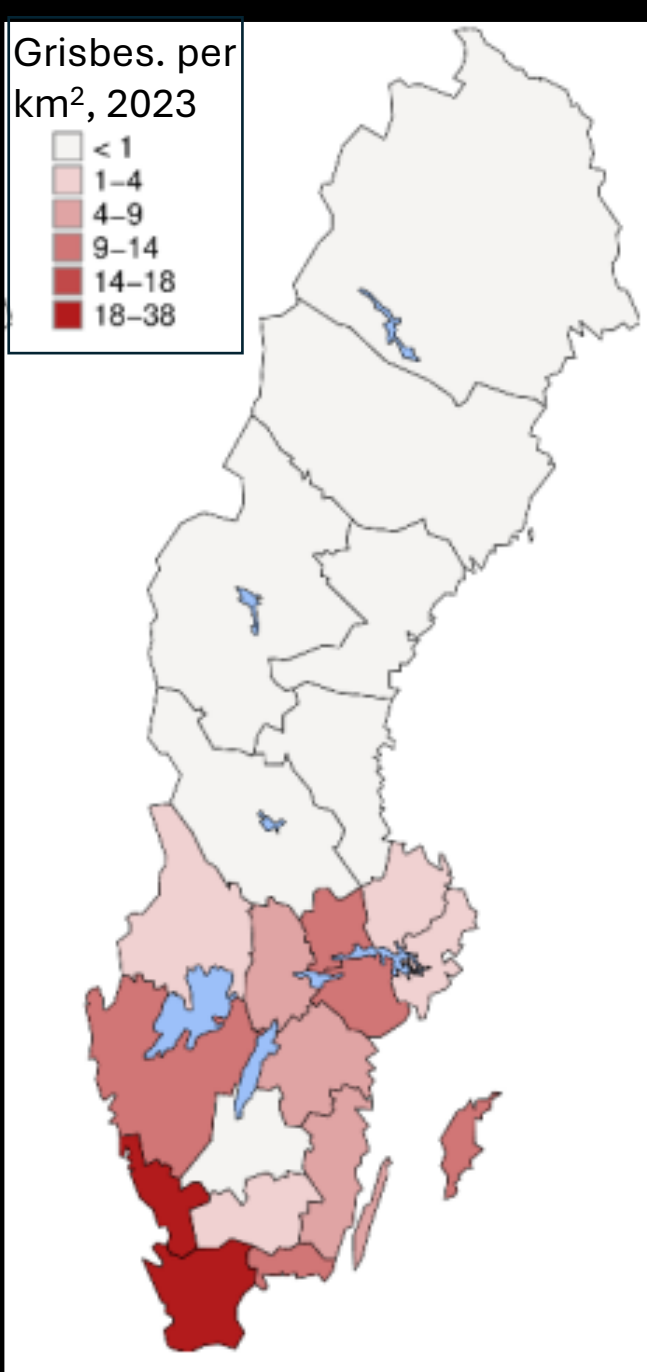
Photo: SVA



Photo: unsplash.com



Vildsvinsbarometern 2024



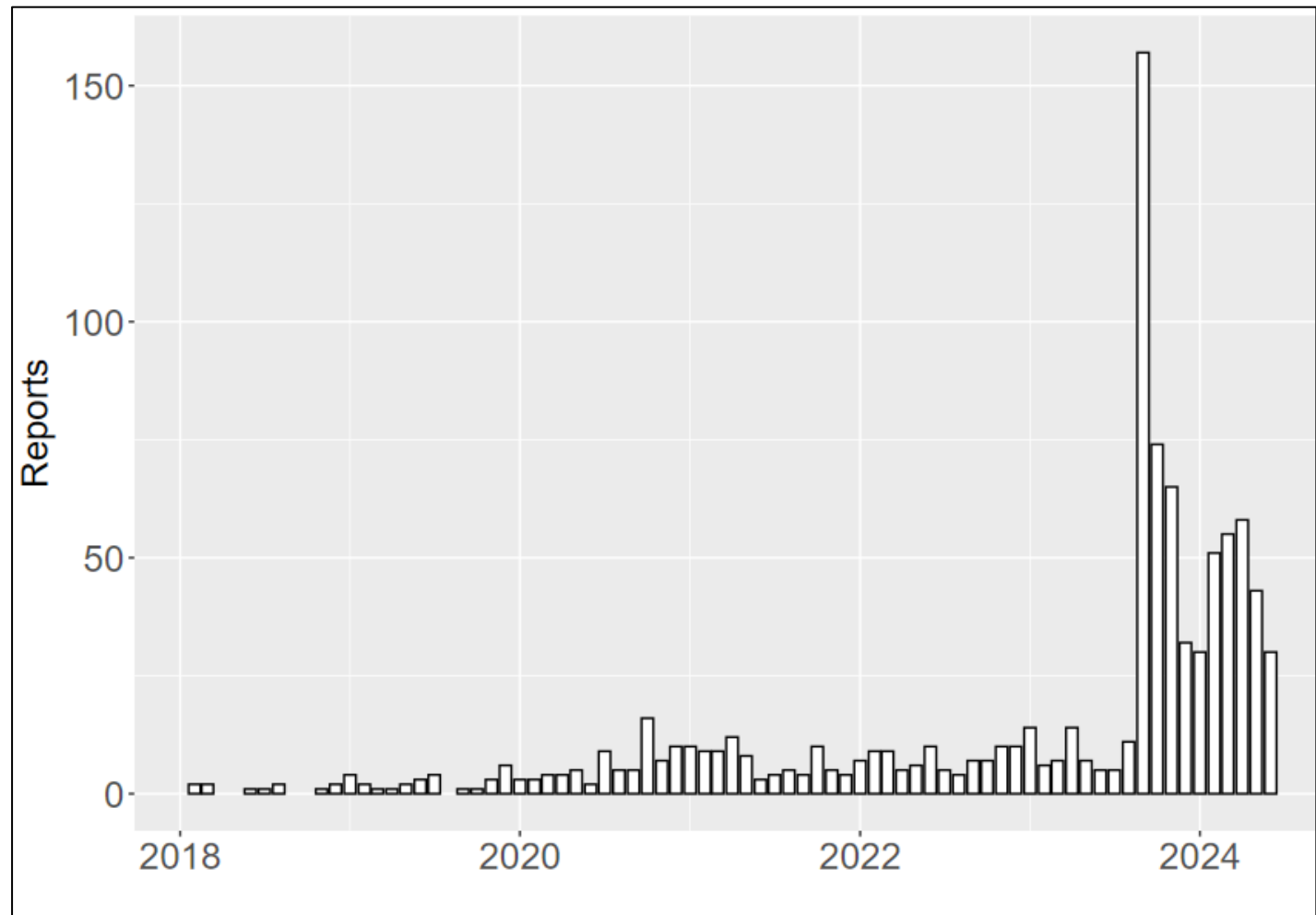
SVJ, 2020

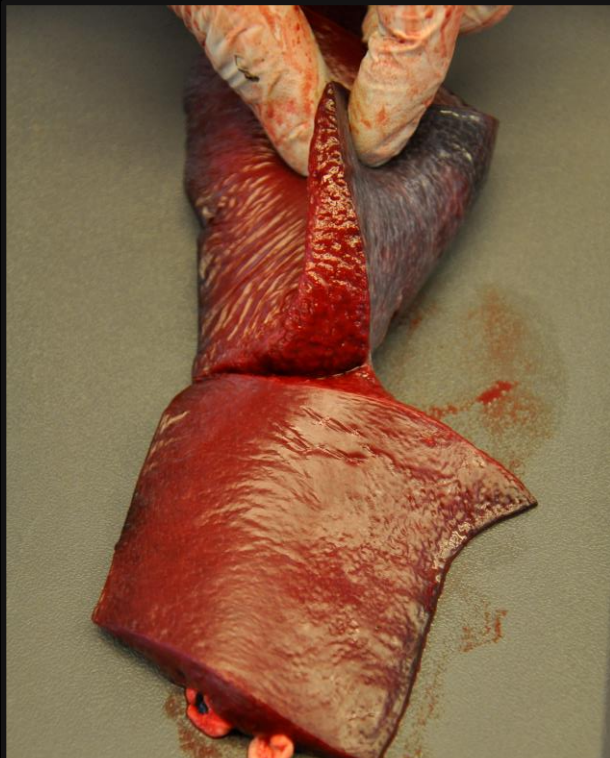


Photo: SVA

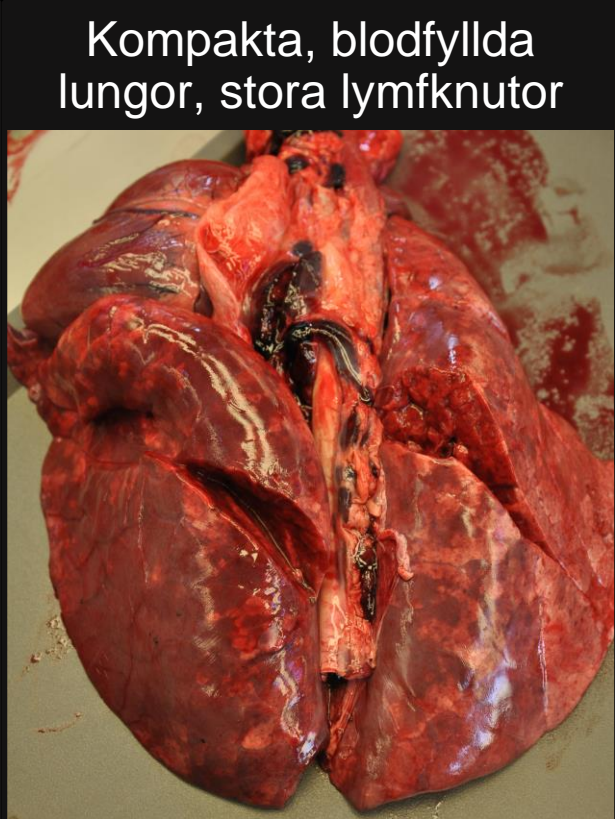


Vildsvinsrapporter till "rapporteravilt.sva.se"





Förstorad mjälte



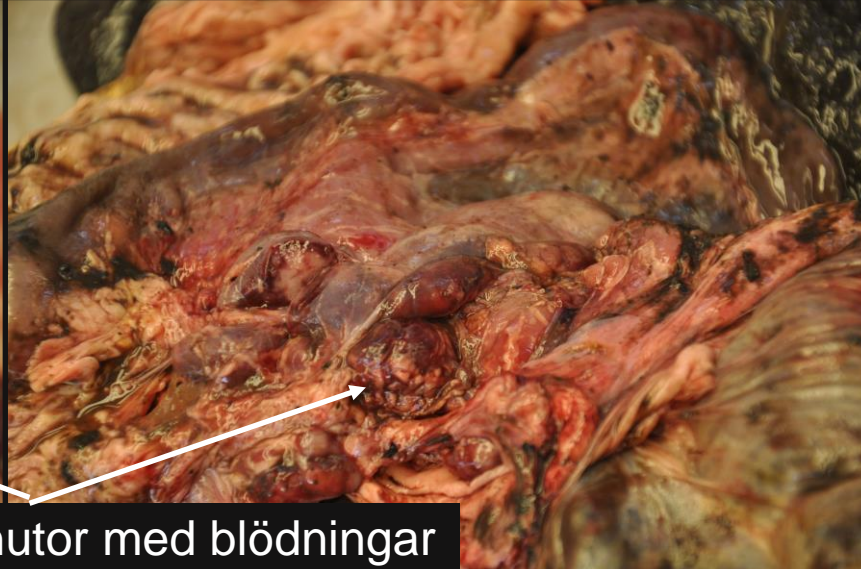
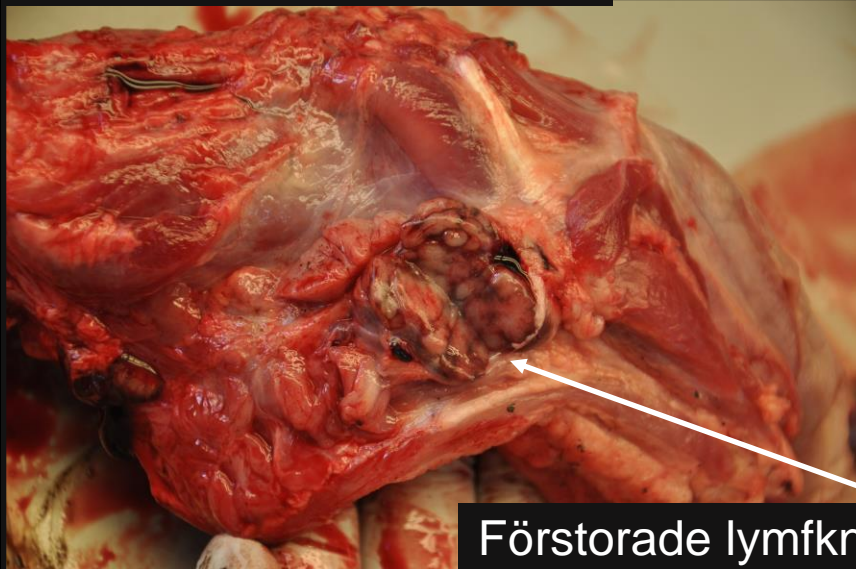
Kompakta, blodfyllda lungor, stora lymfknutor



Blödningar på hjärta och njurar



Foton: G. Averhed, SVA



Förstorade lymfknutor med blödningar

S. Choleraesuis

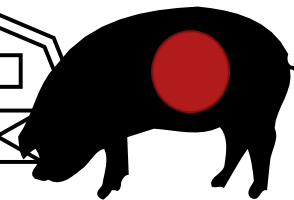
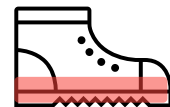
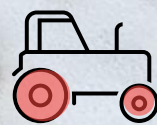
ASF

- Bakteria
- Fekal-Oral

- Virus
- Kroppar/blod

- Kontamination av miljö

- Indirekt smittspridning via fordon, föremål, material, besökare..



Salmonella Choleraesuis

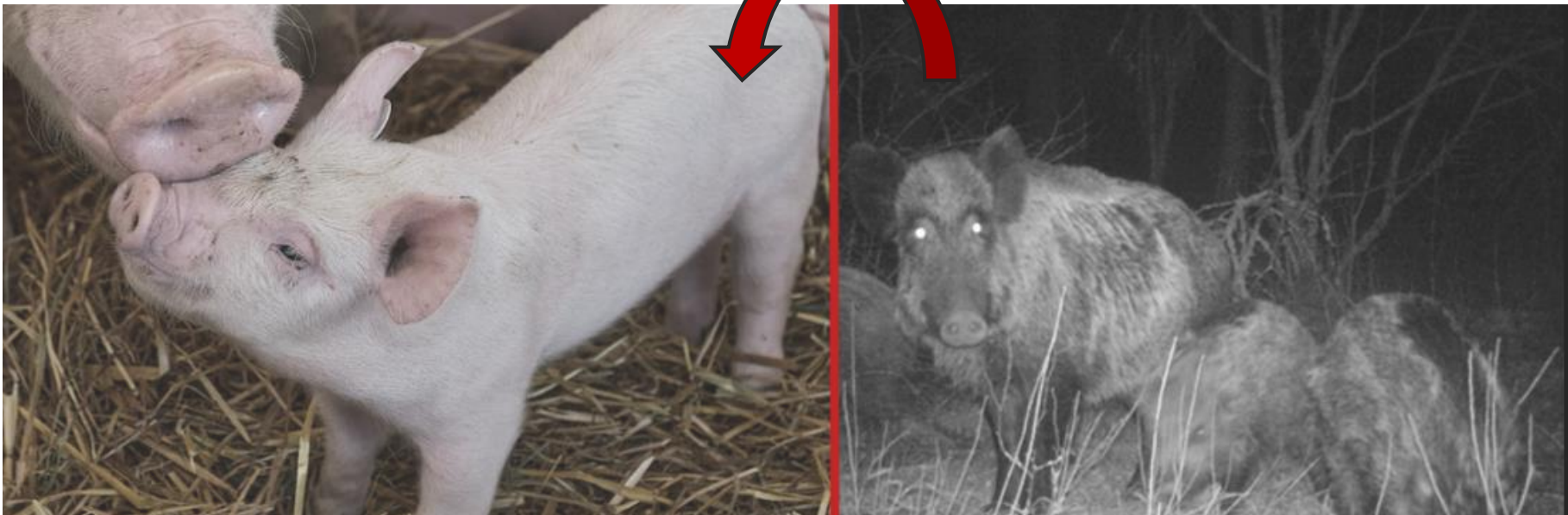
Livdjursproducerande besättning,
Årliga övervakningen

Förekom i den lokala
vildsvinspopulationen

S. Choleraesuis, > 40 år

Indirekt smittspridning

Fjelkner (2023)



I. Enkät

RESEARCH

Open Access



Understanding the interface between European wild boar (*Sus scrofa*) and domestic pigs (*Sus scrofa domesticus*) in Sweden through a questionnaire study

Linda Ernholm^{1,2*}, Karl Ståhl², Aleksija Neimanis³, Stefan Widgren² and Susanna Sternberg-Lewerin¹

II. Enkät, Fokusgrupper

RESEARCH

Open Access



Perceptions and practices of Swedish wild boar hunters in relation to African swine fever before the first outbreak in Sweden

Erika Chenais^{1,2*}, Linda Ernholm^{1,2}, Annie Frisk Brunzell³, Karl Mård⁴, Lotta Svensson⁵, Johanna F. Lindahl¹ and Susanna Sternberg Lewerin²

III.

Viltövervakning



Article

First Detection of *Salmonella enterica* Serovar Choleraesuis in Free Ranging European Wild Boar in Sweden

Linda Ernholm^{1,2}, Susanna Sternberg-Lewerin^{1,*}, Erik Ågren³, Karl Ståhl² and Cecilia Hultén²

From dusk till dawn: Use of camera trapping to assess wild boar (*Sus scrofa*) presence at selected pig holdings in Sweden

Linda Ernholm, Karl Ståhl, Aleksija Neimanis, Stefan Widgren, Susanna Sternberg-Lewerin





I. Enkät (2020)

211/1000 (21%)

~80% vildsvins obs.

~ 60% skördskadorna

Omgivande staket (1.9%)

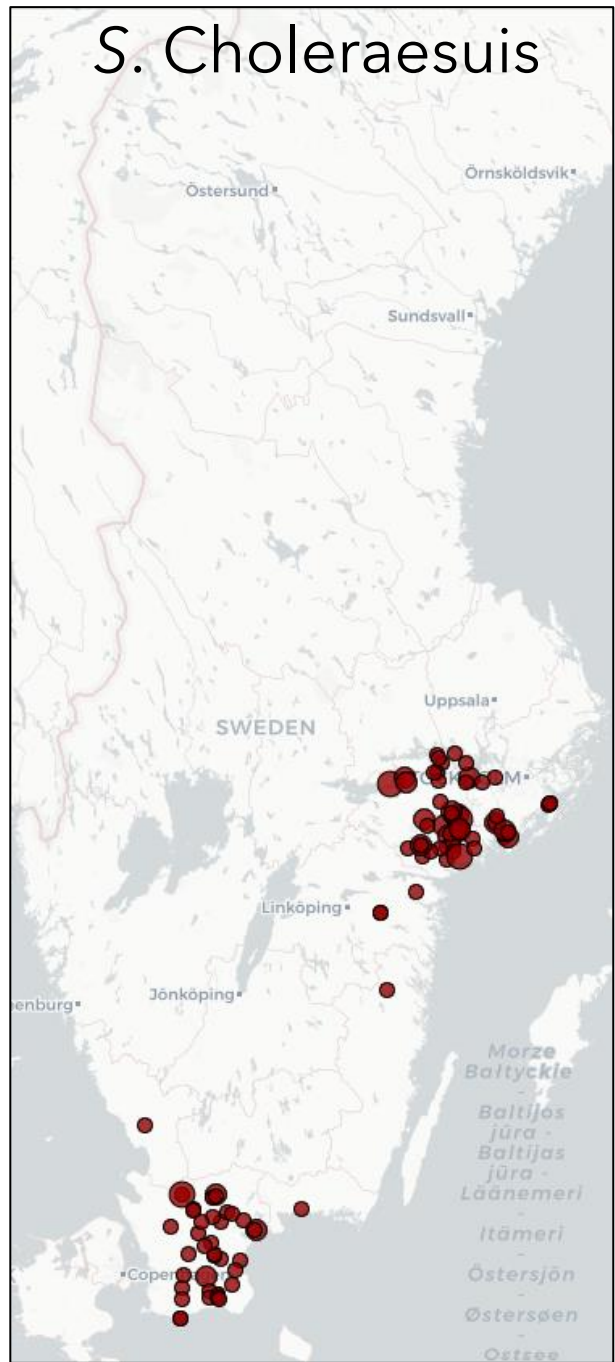
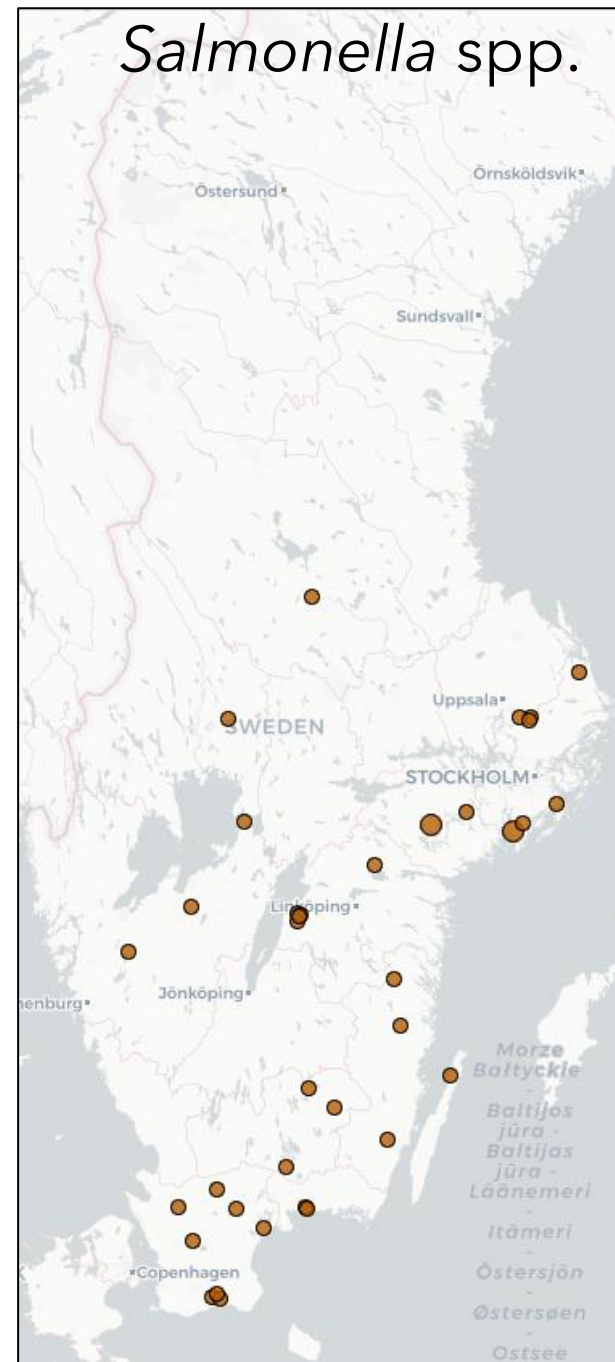
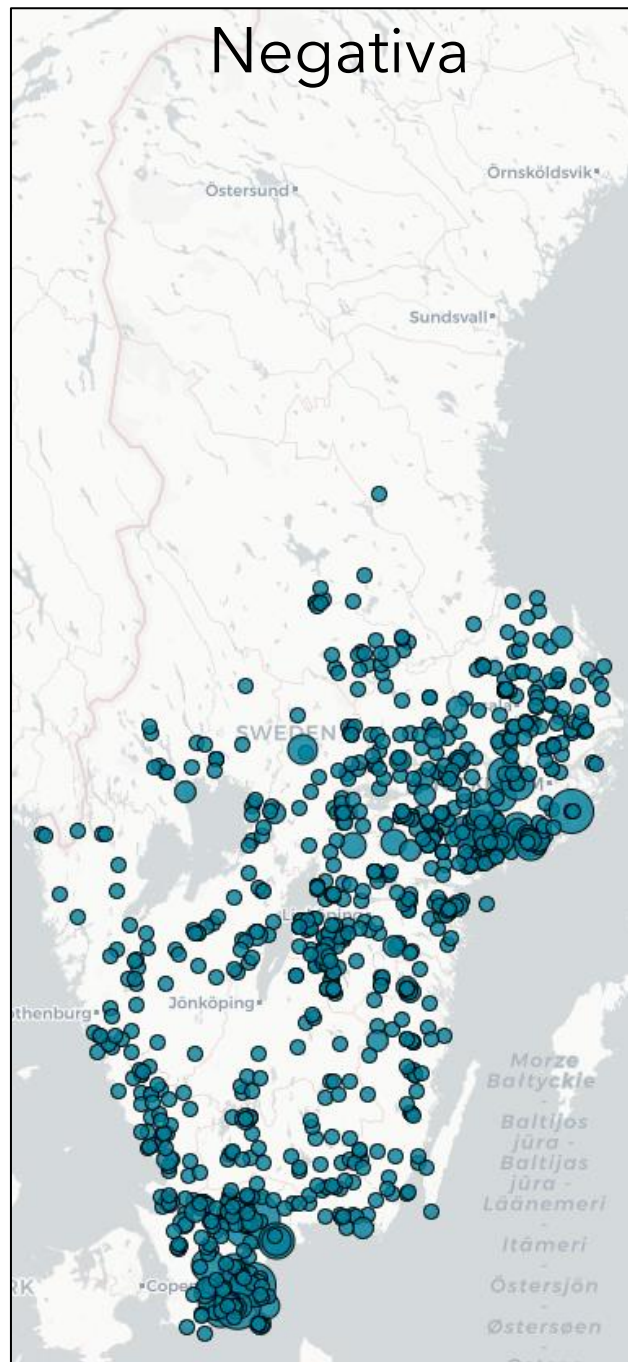
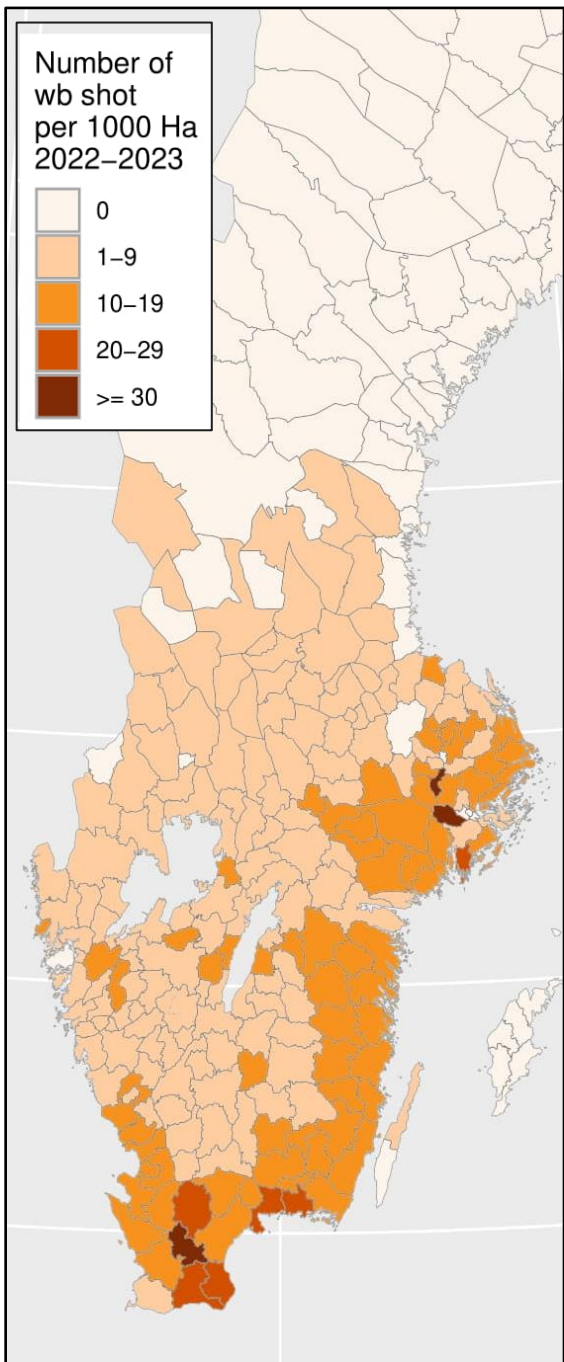
Jakt (61.2%)

Lockfoder (15.0%)

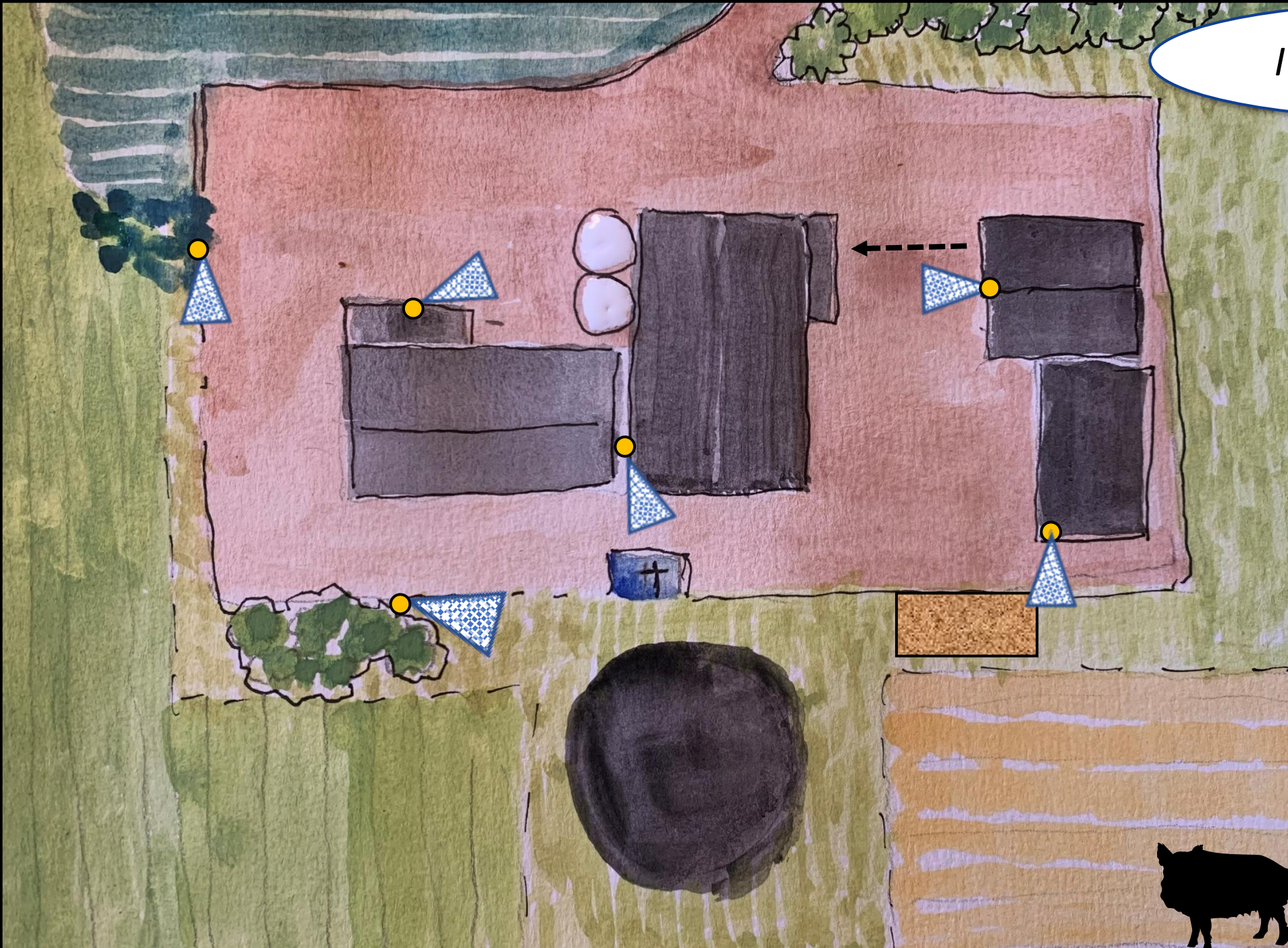
Inget alls (33.5%)

Närvaro av vildsvin kan utgöra en risk och biosäkerhet och riskminimerande åtgärder kan behöva anpassas.





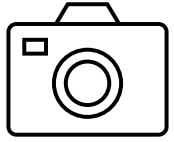
IV. Kamerastudie





2023/06/24 23:32:23 1018 P 20 °C 68 °F

SVA20 2023/06/27 00:02:04 017



Kamerastudien

- Kostnadseffektivt
- Upptäcka viltnärvaro
- Utvärdera skyddsåtgärder
- Motivation?
- Möjliga smittvägar





- Ny situation
- Sjukdomsövervakning vilt/tamdjur
- Biosäkerhet är kontextberoende, Lager-på-lager, fler aktörer
- SSB-ASFmodulen
- Smittoöverföring kan gå åt båda håll

Tack!

linda.ernholm@sva.se

- Grisföretagare
- Jägare
- Djurhälsoorganisationer
- *Gård och djurhälsan, Lundens djurhälsa, Distriktsveterinärerna*

